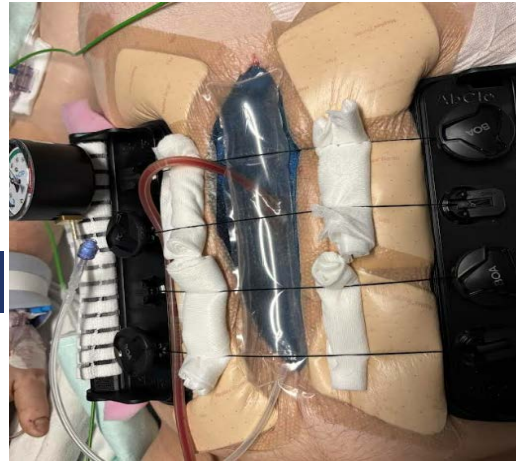


AbClo Abdominal Closure System

AbClo Indications for use:

Indicated for adults who have undergone an Open Abdomen Surgery where their abdomen has been intentionally left open. AbClo prevents lateral retraction of abdominal muscles, loss of domain & abdominal fascia damage while facilitating gradual re-approximation of the fascia.

Note correct system alignment and placement in conjunction with temporary abdominal cover

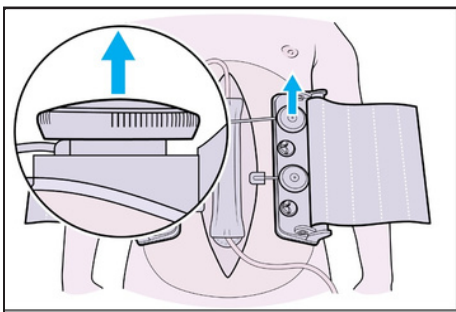


Management Tips:

- The Position of the Rectus Muscle Splints (RMS) should be assessed every shift and after procedures that involve moving the patient such as personal care, turning, and transfers.
- RMS should always be maintained **at least 5cm away from the fascial defect**. RMS should be repositioned twice a day/as needed.
- Skin integrity should be assessed during the repositioning of the RMS/re-tightening of the cables. Areas of direct pressure under the RMS and the binder should be protected with pressure relief dressings, gauze/abdominal pads as shown in the image above.
- Use of **Pink foam** provided in the kit will help prevent shearing on the flanks.
- Apply and maintain downwards and medial (inwards) pressure while tightening the cables

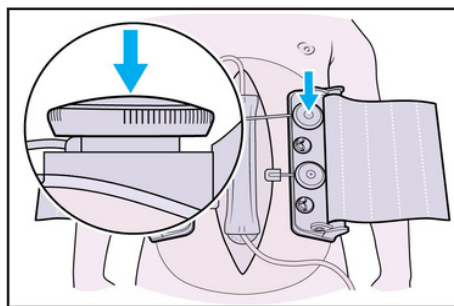
Management of the device tension is based on the adjustment of the Tension dials and cables

To release AbClo system tension:



Pull up on the tensioner dials to release tension on the AbClo system.

To increase AbClo system tension:



Push down on the tensioner dials to lock and rotate clockwise to increase tension.



Maintain tension in the **green zone**.



Scan me for Resources -->

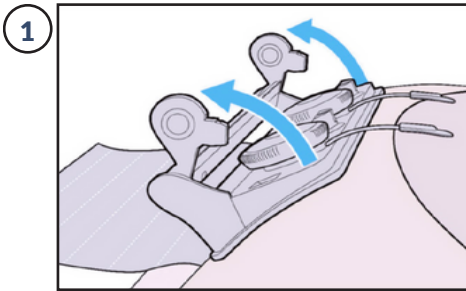


AbClo
Abdominal Fascia Closure Device

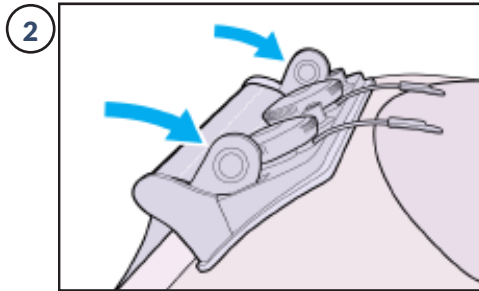
AbClo Abdominal Closure System Management

If the Pressure Balloon Gauge reads in the white zone or if the RMS get displaced during procedures/lose traction/migrate towards the fascial defect:

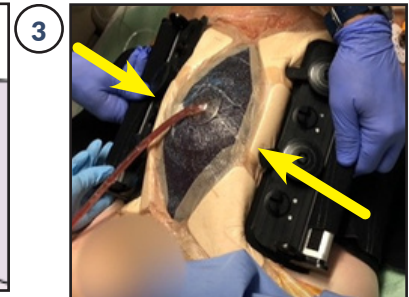
A) Release tension B) Position the RMS back to at least 5cm away from the facial defect by opening the cross bar and pulling the binder through C) Hold the crossbars of the RMS and engage the lateral edge of the rectus muscles by pushing the muscles downwards and towards the midline D) Reengage the cables and tighten slightly, put the balloon gauge underneath all four cables and add more tension while maintaining downwards medial pressure until the gauge reads in the **green zone.**



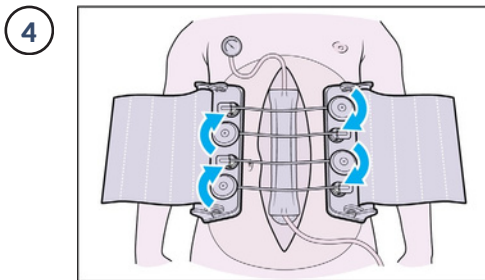
Press the crossbar knobs inwards and up to open the cross bar and adjust the binder.



Push the crossbar down until a snap is heard and ensure it is secured.



Hold the crossbars to push the rectus muscles downwards and medially. Only let go of the crossbars to check the tension on the gauge. **Repeat every time the RMS are repositioned**

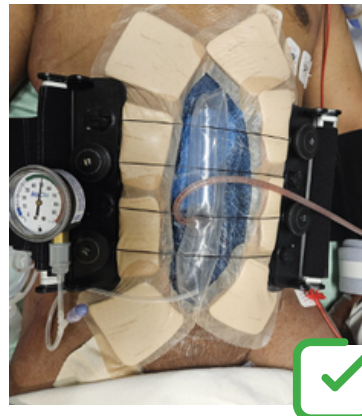


Rotate dials clockwise to apply tension.

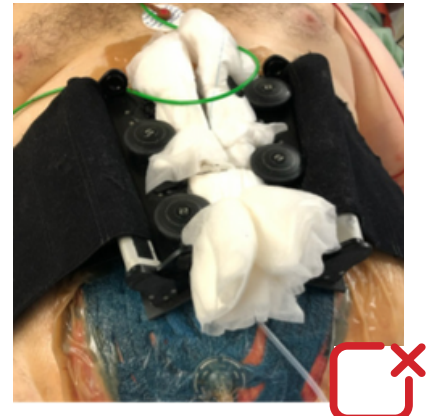
Monitor AbClo:

- Tension balloon gauge is a measure of adequate tension required to medialize the fascia.
- If the tension balloon gauge reads in the **red zone**, release the tension dials.
- If the tension balloon gauge reads below the green zone, evenly increase the device tension via the tension dials to bring the indicator back to the **green zone** by repeating the steps highlighted above.

Correct Placement



Incorrect Placement



Scan me for Resources -->

